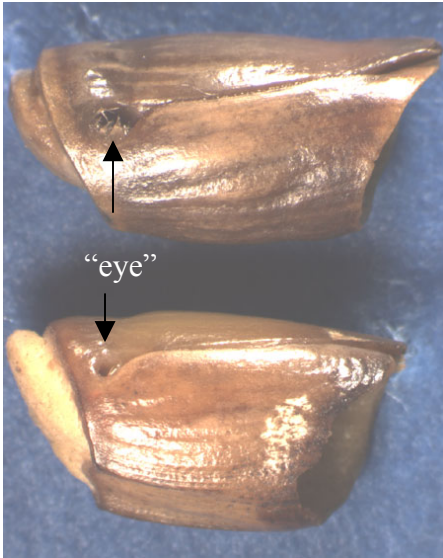


Seed preparation method for TZ test of *Tripsacum dactyloides*

The seed unit of *Tripsacum dactyloides* is a spikelet. Woody glumes are fused with the rachis to form a cup. They tightly enclose the rest of the spikelet. Within the glumes, the lemmas of the fertile and sterile florets are thin, membranous, awnless, and reduced. There is usually one caryopsis per spikelet. Heavy duty clippers are used to cut open the spikelet. Embryo extraction can be done on dry or imbibed seed units. Longitudinal cutting of the caryopsis for staining must be done on imbibed caryopses.

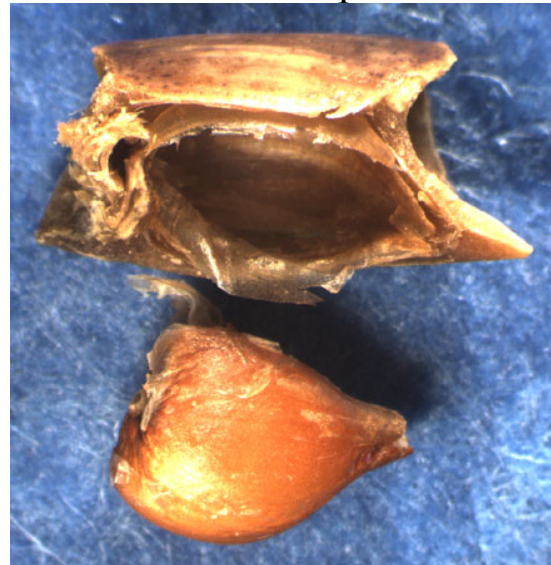
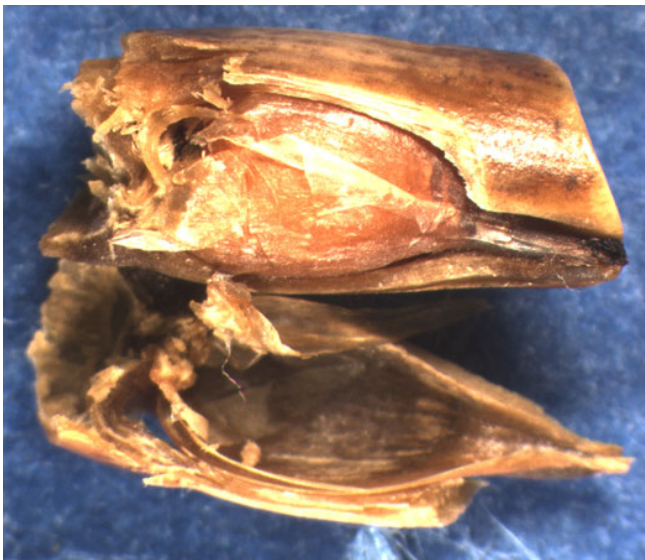
seed unit



Clip on the basal end at the “eyes”



The caryopsis can easily be teased out with tweezers/forceps.

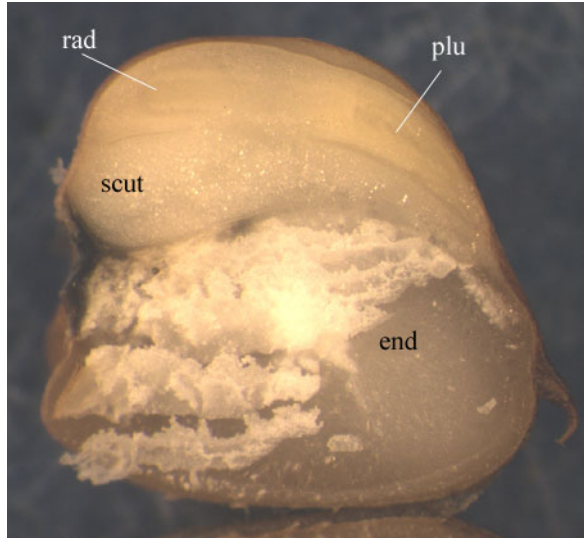
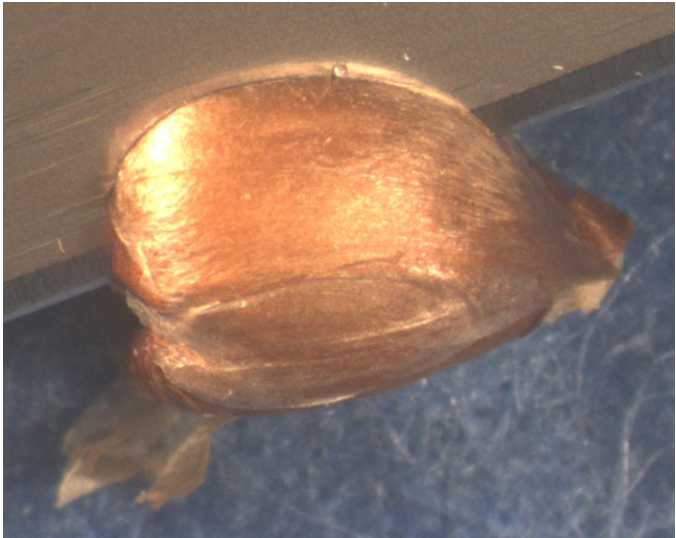


Longitudinally cut the caryopsis through the embryo axis. The embryo extends along the full length of the caryopsis.

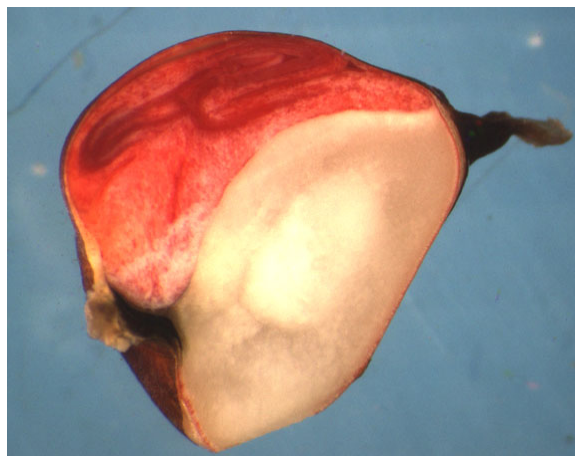
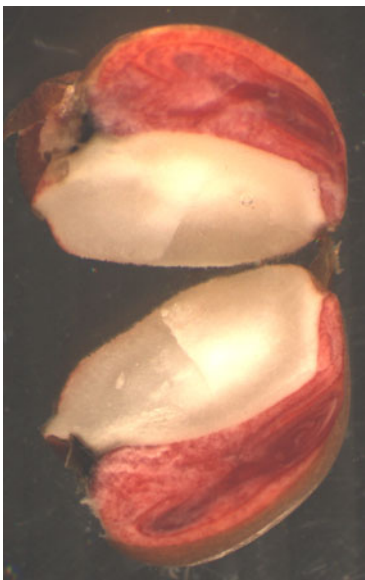
- Completely bisect the embryo and retain one half for staining and evaluation.

OR

- Cut deeply through the embryo side but not completely through the caryopsis. The pericarp on the back (endosperm side) will hold the two halves together. Keep both halves together for staining and evaluation.



Viable embryos



Use evaluation criteria for AOSA Poaceae I (similar to *Zea*)