

FAMILY: MALVACEAEGenus: *Sphaeralcea***1. PRECONDITIONING:**

METHOD	TIME (hrs)	TEMP (°C)
imbibe on moist media or soak	overnight	20-25

Hard seeds may be present. Clip where shown to allow imbibition in hard seeds. Using a sharp blade, chip a small portion of the seed coat off the cotyledon end of the seed. Clipping location should be away from the radicle or hypocotyl/cotyledon junction. Use of a dissecting microscope is recommended.

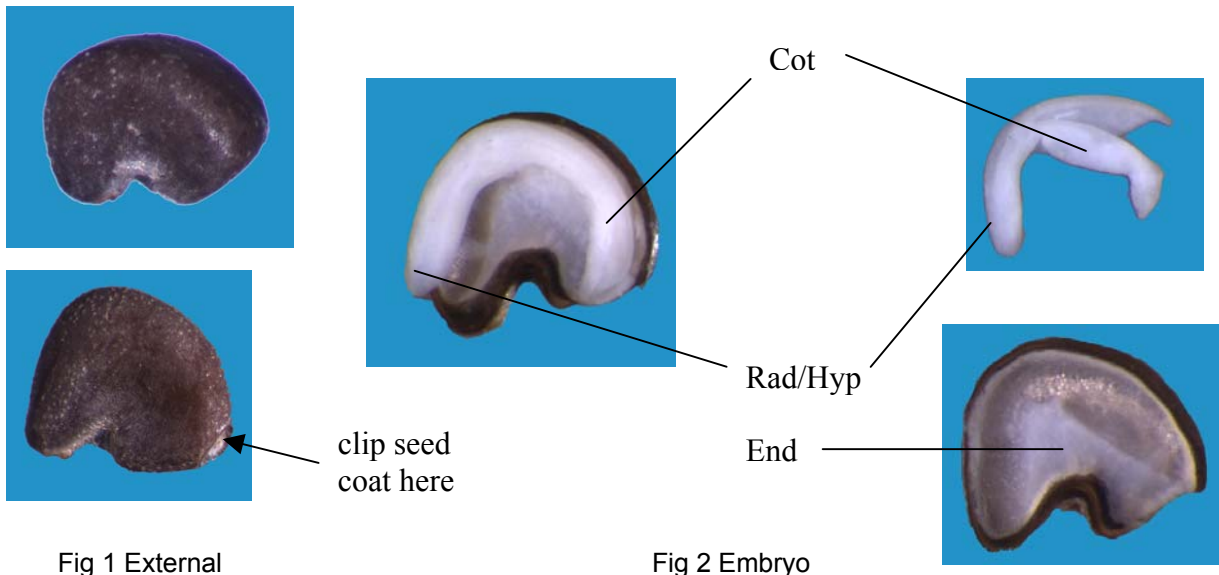
Morphology

Fig 1 External

Fig 2 Embryo

**2. PREPARATION AND STAINING:**

METHOD	TZ Conc(%)	TIME (hrs)	TEMP (°C)
cut deeply leaving part of the seed coat uncut to hold the two halves together	0.1	overnight	35
extract the entire embryo	1.0	overnight	35



Fig 3 Preparation method

2006

FAMILY: MALVACEAE

GENUS: *Sphaeralcea*

Post Staining Notes: None



3. EVALUATION:

VIABLE (NORMAL STAINING)

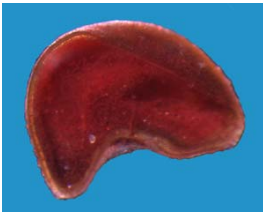
- entire embryo evenly stained
- entire endosperm evenly stained

NON-VIABLE (ABNORMAL OR NO STAINING)

- any part of embryo or endosperm unstained

OTHER TISSUE/NOTES

+



-

-

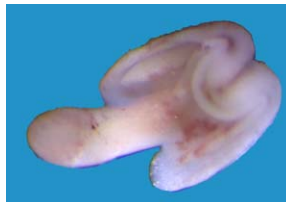


Fig 4 Seed stain evaluation

Lab references: 1, 5, 11