

**FAMILY: POACEAE**

**DRAFT**

Genus: *Buchloe dactyloides*

page date: 10/2005



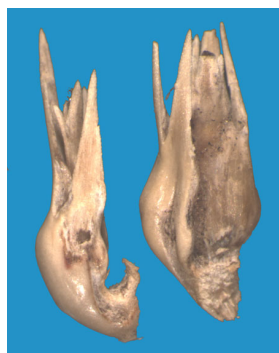
**1. PRECONDITIONING:**

METHOD	TIME (hrs)	TEMP (°C)
imbibe on moist blotters	overnight	20-25

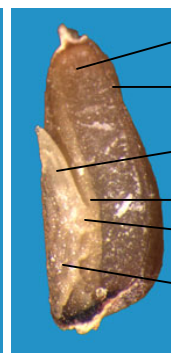
**Morphology**



External (bur)



Caryopsis



End  
Pcrp  
Plu  
Scut  
Scut node  
Rad

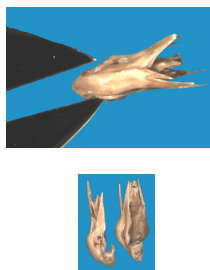


**2. PREPARATION AND STAINING:**

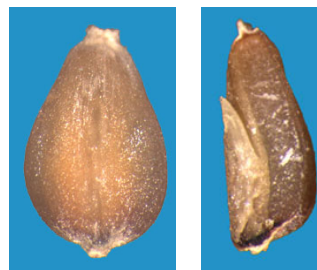
METHOD	TZ Conc(%)	TIME (hrs)	TEMP (°C)
1. Laterally cut bur through all caryopses	1.0	overnight	20-30
2. Cut apart bur to extract largest caryopsis. Longitudinally cut caryopsis.	0.1	4-6 hrs.	20-30



lateral cut



caryopsis extraction



longitudinal cut

# ASSOCIATION OF OFFICIAL SEED ANALYSTS

## FAMILY: POACEAE

GENUS: *Buchloe*

Post Staining Notes:



### 3. Evaluation:

#### VIABLE (NORMAL STAINING)

Laterally cut burs:

- scutellum and embryonic axis stained for at least one caryopsis

Longitudinally cut caryopses:

- radicle, plumule, and scutellar node stained

- scutellum region unstained for less than 1/3 the area and unstained region is away from the scutellar node.

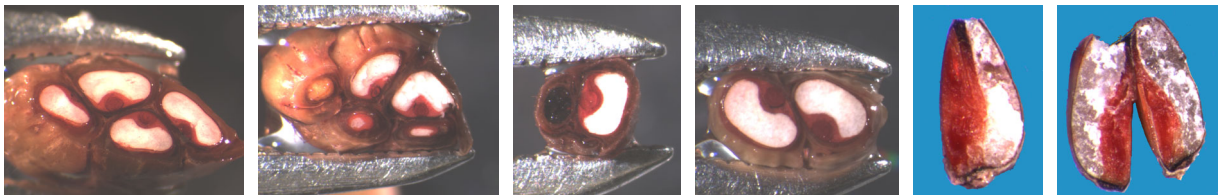
#### NON-VIABLE (ABNORMAL OR NO STAINING)

- any part of the plumule, radicle, or scutellar node unstained

- soft or flaccid embryo

- more than 1/3 of scutellar region unstained

Viable



Non-Viable



Reference Labs: NCGRP, MWSS