

**FAMILY: TROPAEOLACEAE**Genus: *Tropaeolum***1. PRECONDITIONING:**

METHOD	TIME (hrs)	TEMP (°C)
imbibe on moist blotters, filter paper, or paper towels	overnight	20-25

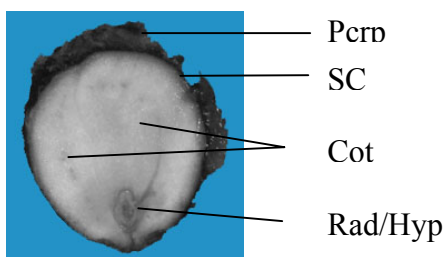
**Morphology**Fig 1 External  
(mericarp)

Fig 2 Embryo

**2. PREPARATION AND STAINING:**

METHOD	TZ Conc(%)	TIME (hrs)	TEMP (°C)
cut longitudinally leaving seed intact at distal end	0.1	overnight to 24	20-25



Fig 3 Preparation method

# ASSOCIATION OF OFFICIAL SEED ANALYSTS

2005

## FAMILY: TROPAEOLACEAE

GENUS: *Tropaeolum*

Post Staining Notes: None



### 3. EVALUATION:

#### VIABLE (NORMAL STAINING)

- entire embryo evenly stained

#### NON-VIABLE (ABNORMAL OR NO STAINING)

- any essential part of embryo unstained
- cotyledon unstained on cut surface

#### OTHER TISSUE/NOTES

Cotyledons stain rapidly on cut surface, but penetration into rest of tissue is quite slow. Stain may not penetrate cotyledon tissue at all.

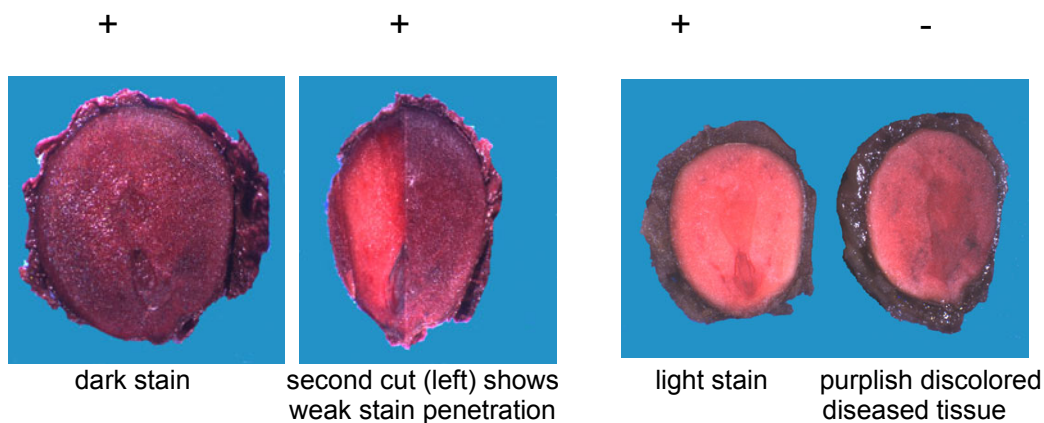


Fig 4 Seed stain evaluation