

**FAMILY: SOLANACEAE**Genus: *Petunia*, *Nicotiana***1. PRECONDITIONING:**

METHOD	TIME (hrs)	TEMP (°C)
imbibe on moist blotters, filter paper, or paper towels	overnight	20-25

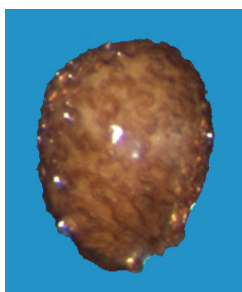
**Morphology***Nicotiana*

Fig 1 External

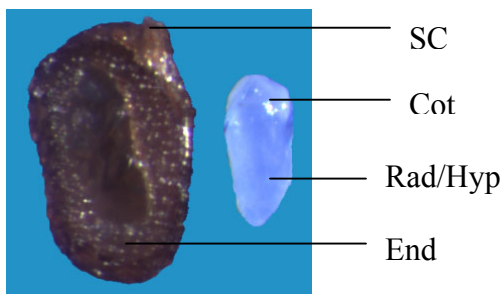


Fig 2 Embryo

**2. PREPARATION AND STAINING:**

METHOD	TZ Conc(%)	TIME (hrs)	TEMP (°C)
cut deeply leaving part of the seed coat uncut to hold the two halves together	0.1	overnight to 24	35

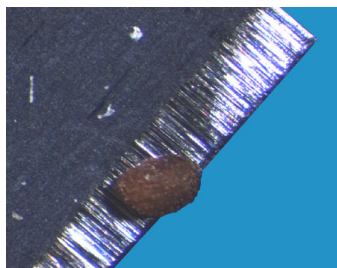
*Petunia**Nicotiana*

Fig 3 Preparation method

2005

**FAMILY: SOLANACEAE**

GENUS: *Petunia*, *Nicotiana*

Post Staining Notes: None



**3. EVALUATION:**

**VIABLE (NORMAL STAINING)**

- entire embryo evenly stained
- entire endosperm evenly stained

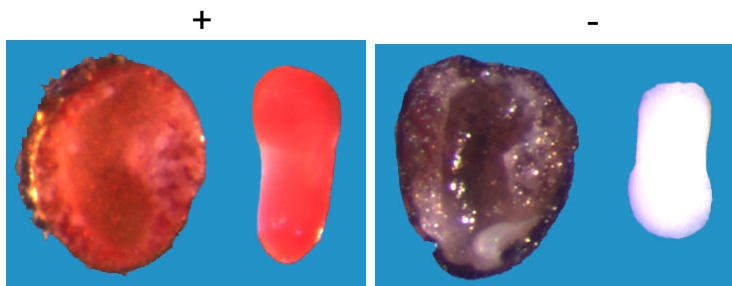
**NON-VIABLE (ABNORMAL OR NO STAINING)**

- any part of embryo or endosperm unstained

**OTHER TISSUE/NOTES**

Normal endosperm may appear granular.

*Petunia*



*Nicotiana*

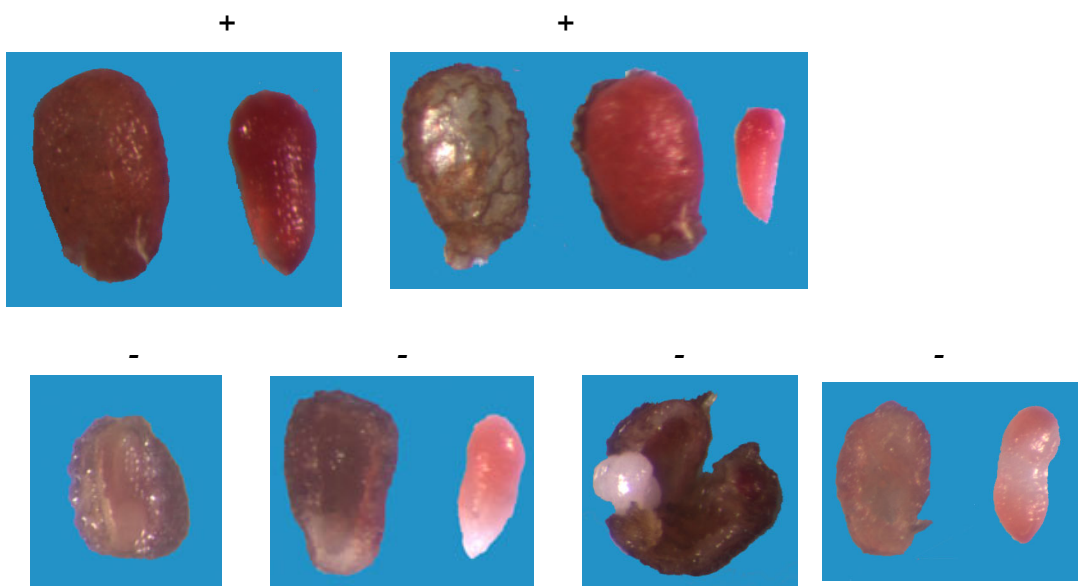


Fig 4 Seed stain evaluation